

WELCOME EVERYONE

Bramhall High School is planning a new replacement school and sports facilities for the community. The project is being delivered by the Department for Education through Willmott Dixon, through its School Rebuilding Programme.

This consultation is the culmination of work to set out those plans and ahead of submitting the planning application we are seeking your views and invite you to provide any feedback that you may have.

Your comments will help frame how the proposals will be dealt with by Stockport Council when the planning application is made in April.

BRAMHALL HIGH SCHOOL

Bramhall High School is a thriving, academically successful and fully comprehensive school, educating around 1,350 students aged 11–16. We are proud to serve a diverse community and to provide an inclusive environment where every young person is known, valued and supported to achieve their very best. Our strengths include consistently strong examination outcomes across a broad range of subjects, exceptional sporting achievements, a vibrant and ambitious performing arts programme, and a deeply embedded culture of care for student wellbeing.

We are praised and recognised for our high-quality pastoral support as well as our commitment to meeting the needs of every learner. Our broad and balanced curriculum is designed to respond to the demands of an ever-changing world while remaining firmly focused on preparing students for their next steps. At Bramhall High School, students benefit from rich opportunities both inside and beyond the classroom, enabling them to grow academically, socially and personally.

Our Core Values

At the heart of Bramhall High School are our core values of Respect, Resilience and Excellence. These values shape every aspect of school life and guide the way our students learn, interact and contribute to the world around them.

We are committed to ensuring that every student, regardless of background or starting point, makes exceptional progress and leaves us not only with strong academic qualifications but also with a clear moral compass and the confidence to thrive in life. Our values help students develop the knowledge, skills and character. They help them become well-rounded, responsible and compassionate citizens who are ready to embrace the opportunities and challenges of the future.

Our Vision

Our vision is simple and ambitious: Every Student, in Every Subject, achieving Every Grade possible. We believe that all young people can excel when they are challenged, supported and inspired, and we work tirelessly to ensure that each student fulfils their potential.

Through our core values of Respect, Resilience and Excellence, we create an environment where aspirations are high and achievement is celebrated. We offer the right balance of academic challenge, personalised care and enriching experiences to support the holistic development of every child. As a result, our students leave Bramhall High School as confident, creative and capable individuals, ready to make a positive impact in the world.



View of the proposed main entrance



View of the proposed community entrance



View of the proposed external social area

BRAMHALL HIGH SCHOOL PUBLIC CONSULTATION

PROPOSAL SUMMARY

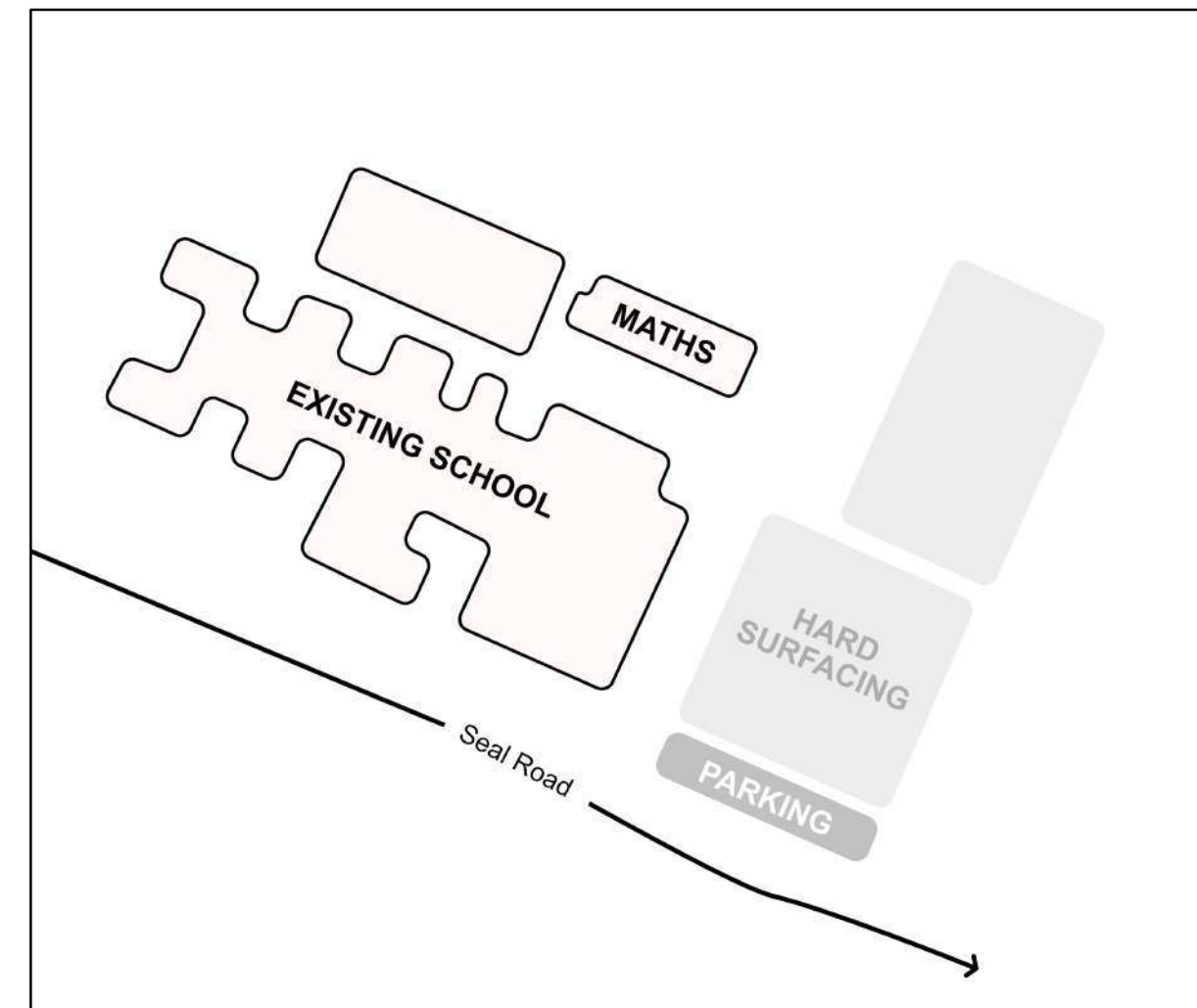
Bramhall High School will be rebuilt to replace all the existing facilities with exception of the Maths block which will be retained as part of the masterplan.

The existing school buildings were constructed in the late 1960s, are now at the end of their design life having recently been temporarily repaired to correct defects in reinforced autoclaved aerated concrete (RAAC).

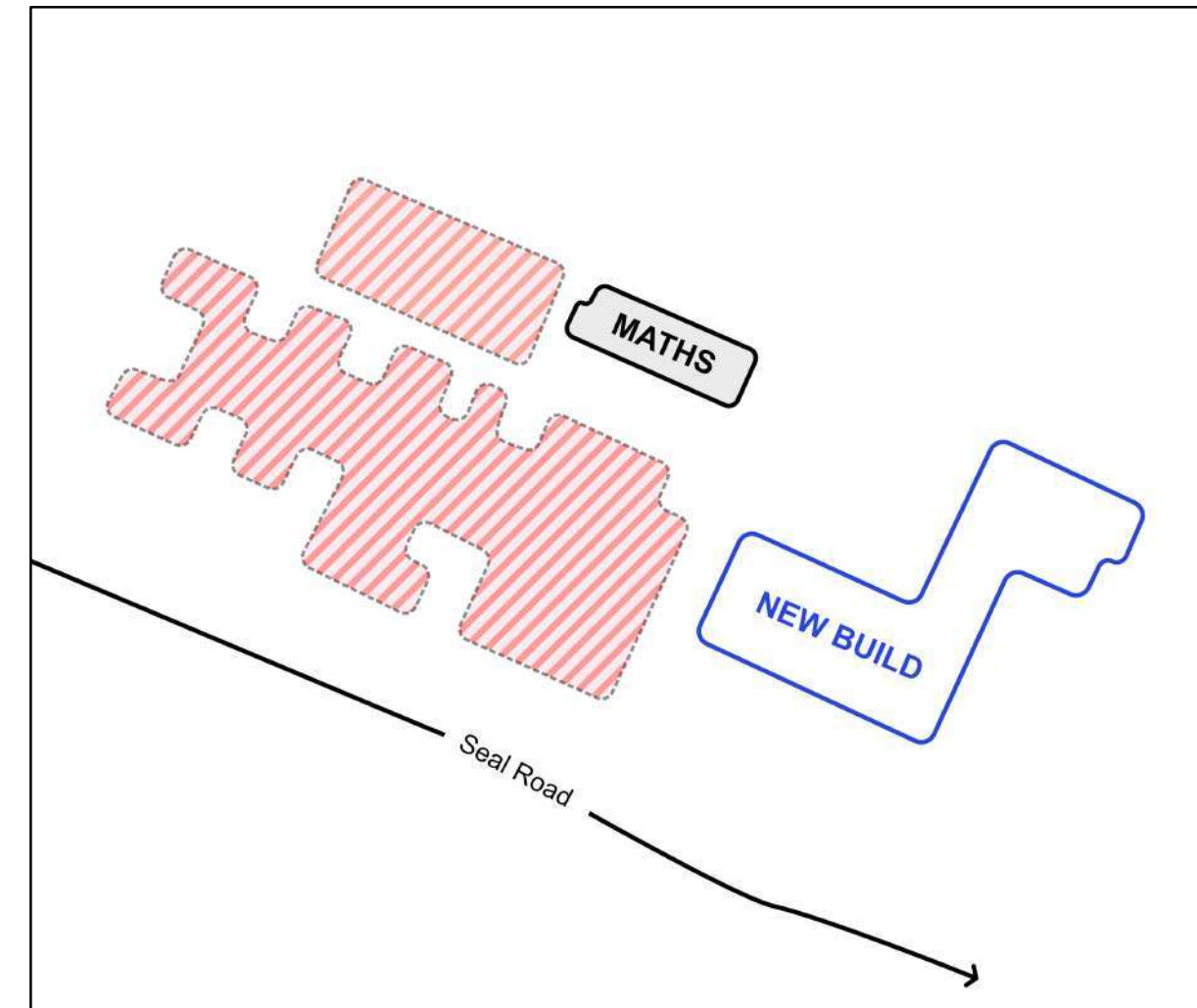
A new 3-storey main school building with attached sports hall and support facilities will be built alongside the existing school broadly in the location of the existing hardcourts and edge of the main playing field. Once completed the school will relocate into the new building and the existing school buildings will be demolished and the cleared area laid out as informal open space.

Replacement external sports facilities to be delivered under the project be Willmott Dixon including two multi-use games areas (MUGAs) and reinstatement of areas of the main playing fields affected by construction works. Separately, Stockport Council proposes to deliver a new all-weather artificial pitch alongside the existing hockey pitch.

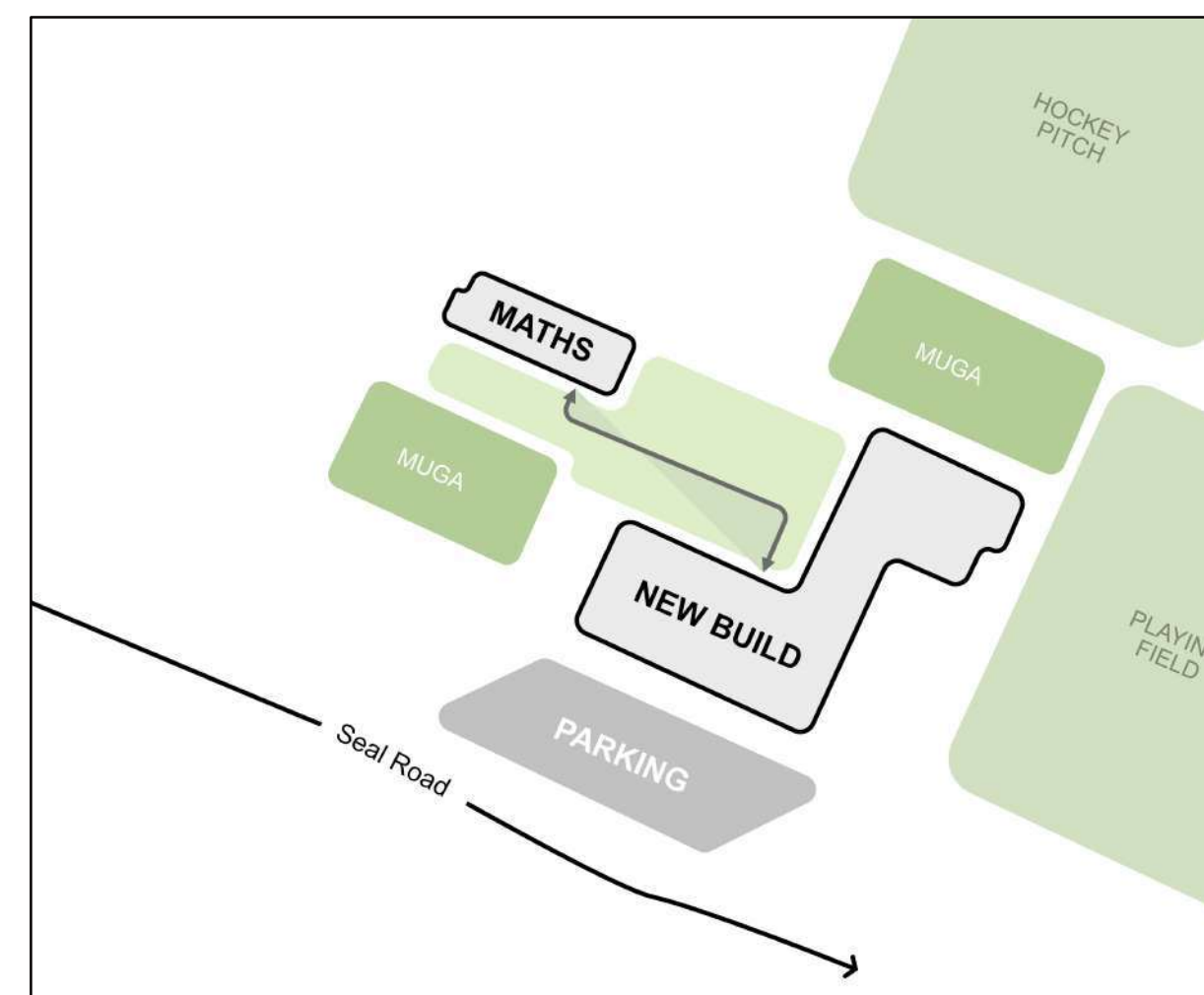
The new school will have the same potential capacity for 1350 pupils. Longer-term space is set aside in the masterplan for future expansion if required.



Existing School



Demolition and new build



Landscaping

DESIGN BRIEF

The proposals will include:

- 25 new general teaching classrooms, alongside a specialist drama studio, 10 science labs, workshops, Computing and ICT classrooms, art & design classrooms
- 5 SEN classrooms for pupils with social, emotional and mental health needs
- Assembly and dining halls
- Staff, catering and support facilities
- Retention of the existing Maths block
- Indoor Sport England compliant sports hall, activity room and changing facilities
- Two replacement multi-use games areas (MUGAs)
- Provision of a new all-weather pitch beside the retained hockey pitch to be delivered by Stockport Council
- New staff car park, including dedicated parking for SEMH and accessible parking bays
- New 200 capacity covered bike storage facility
- New off-street bus stops and turning area for school services
- New landscaping, covered and open areas for seating, informal recreation

Working collaboratively the design team has sought to develop a scheme that delivers a better school environment that can grow and serve the local community. Key design drivers are:

- Pupil focus
- Robust, flexible and adaptable spaces
- Community use and accessibility
- Sustainability
- Projecting a 'professional' identity

Central to the design is understanding how the new school and grounds will be used – this encompasses pupil, staff, community, visitors, evening and weekend use. Through this understanding we create a welcoming and functional environment at all times of the day.



MASTERPLAN

Key

- Land Registry Boundary (GM932066)
- Land Registry Boundary (GM38781)
- Paths/hard social spaces
- Permeable pedestrian path
- Road/car park
-  Habitat learning garden
-  Hard outdoor PE
- Grass
-  Planting
-  Trees
-  External Canopy
- Existing fence retained
- Proposed 2.4m Secure Fence
- Proposed 1.2m Railings (Timber)
- Proposed 1.2m Railings (Bowtop) to Habitat area
- Proposed 3.0m MUGA fence
- Proposed 1.8m Internal Secure Fence



GROUND FLOOR

The main entrance for staff and visitors [A] is located within the recess on the South elevation. The main entrance is supervised by reception [C]. Reception staff will control visitor access, including to the interview room [D], which has separate staff access, and to the conference room [E] and accessible toilets [E] which are located nearby.

Students will enter separately through the gates [B] to the west and into the school building via the stair core [B] to the side of the main entrance.

The SEND/Thrive/Transition Hubs have their own dedicated entrance [F]. The area can be accessed from the main school, but cross corridor doors allow a level of privacy and noise control.

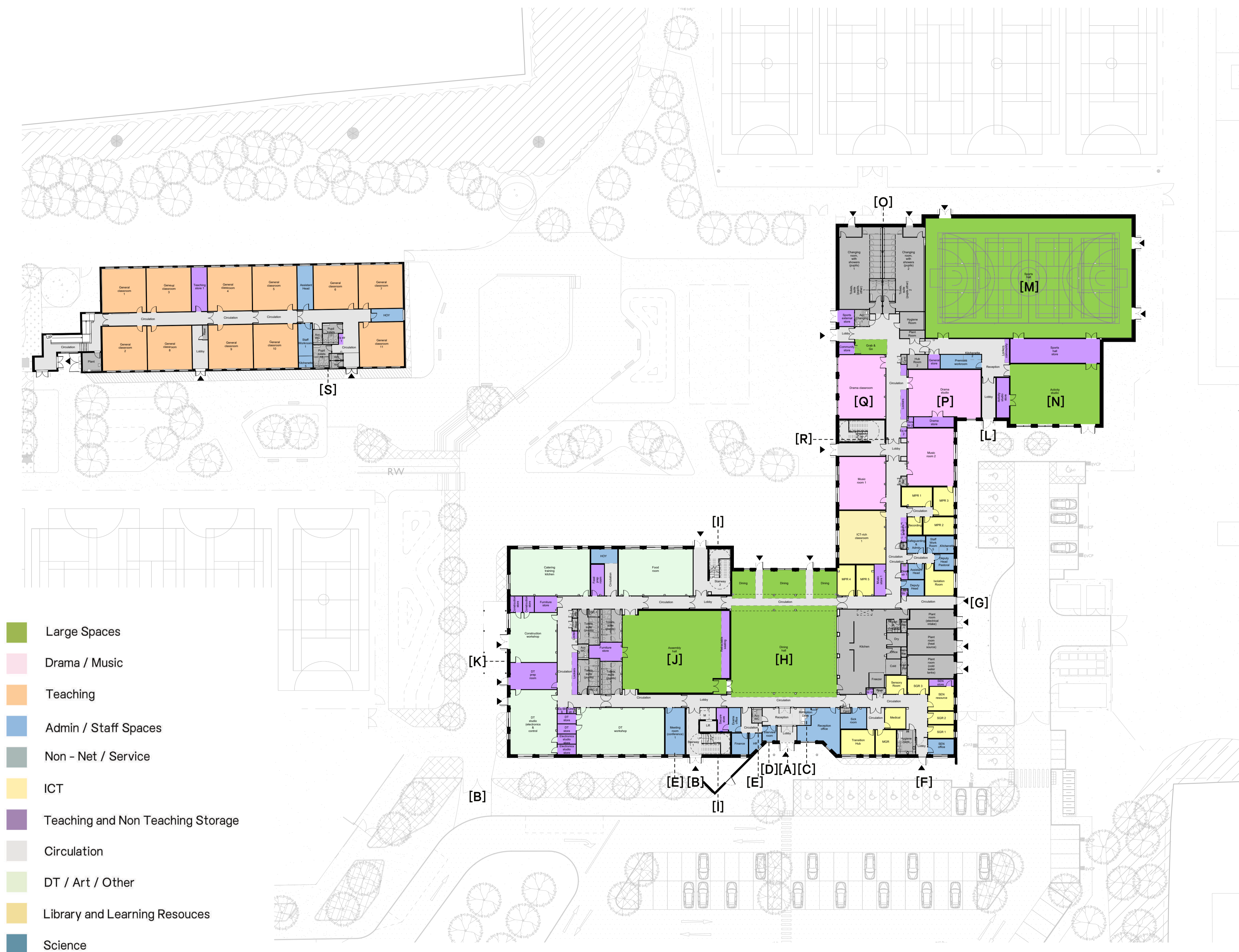
The kitchen is also served by a dedicated entrance for service and deliveries [G].

Beyond the main entrance is the dining atrium [H]. Centred in the middle of the school block, it has great visual and physical connection through to the external areas, along with the general circulation stairs [I] to the upper floors. Next to the dining is the main hall [J]. The two spaces are closely linked with dining serving as a waiting and gathering area prior to any assemblies or performances taking place within the main hall.

The west end of the school contains the DT, food and catering departments [K] and toilets suites serving the students.

Another recess is provided for the community entrance [L] to the sports and performing arts area. This area is intended for community use and contains the Sports Hall [M], Activity Studio [N], Changing Facilities [O], Drama Studio [P], Drama and Music Classroom [Q]. Past these areas, cross corridor doors [R] can separate the community use areas from the main school outside school operating hours.

The retained maths block is linked with the new block via carefully landscaped external areas. Maths is largely retained in its existing condition with one exception-newly provided toilet facilities [S] which will improve the staff and student experience in the building.



- Large Spaces
- Drama / Music
- Teaching
- Admin / Staff Spaces
- Non - Net / Service
- ICT
- Teaching and Non Teaching Storage
- Circulation
- DT / Art / Other
- Library and Learning Resources
- Science

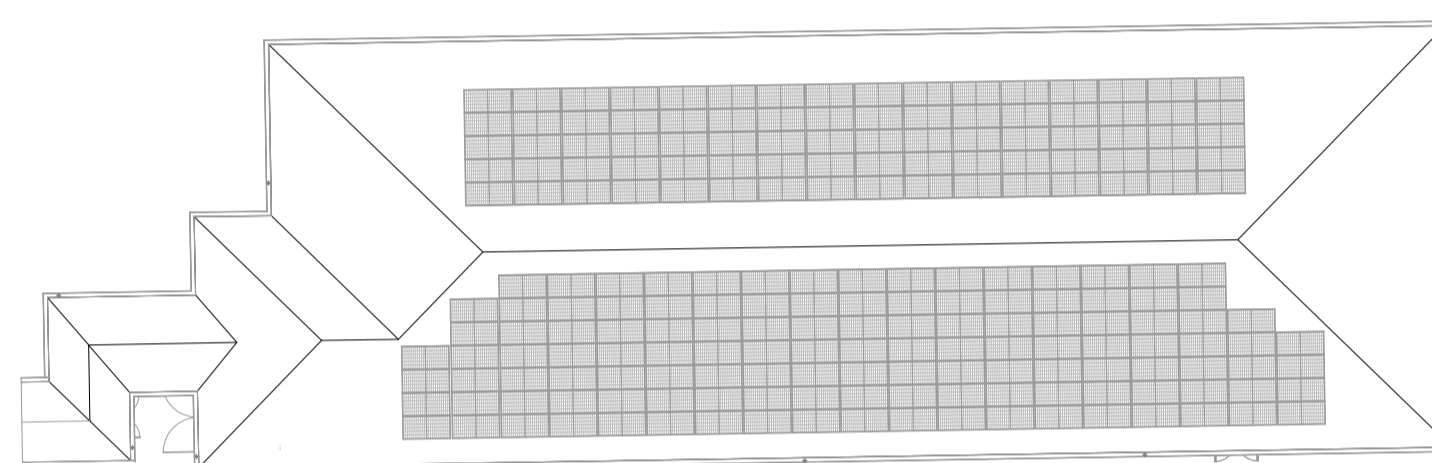
FIRST FLOOR

The first floor hosts just over half of the general classrooms [A] of the new building. They are grouped together as much as is practical to enable flexible allocation and a logical circulation flow within the school.

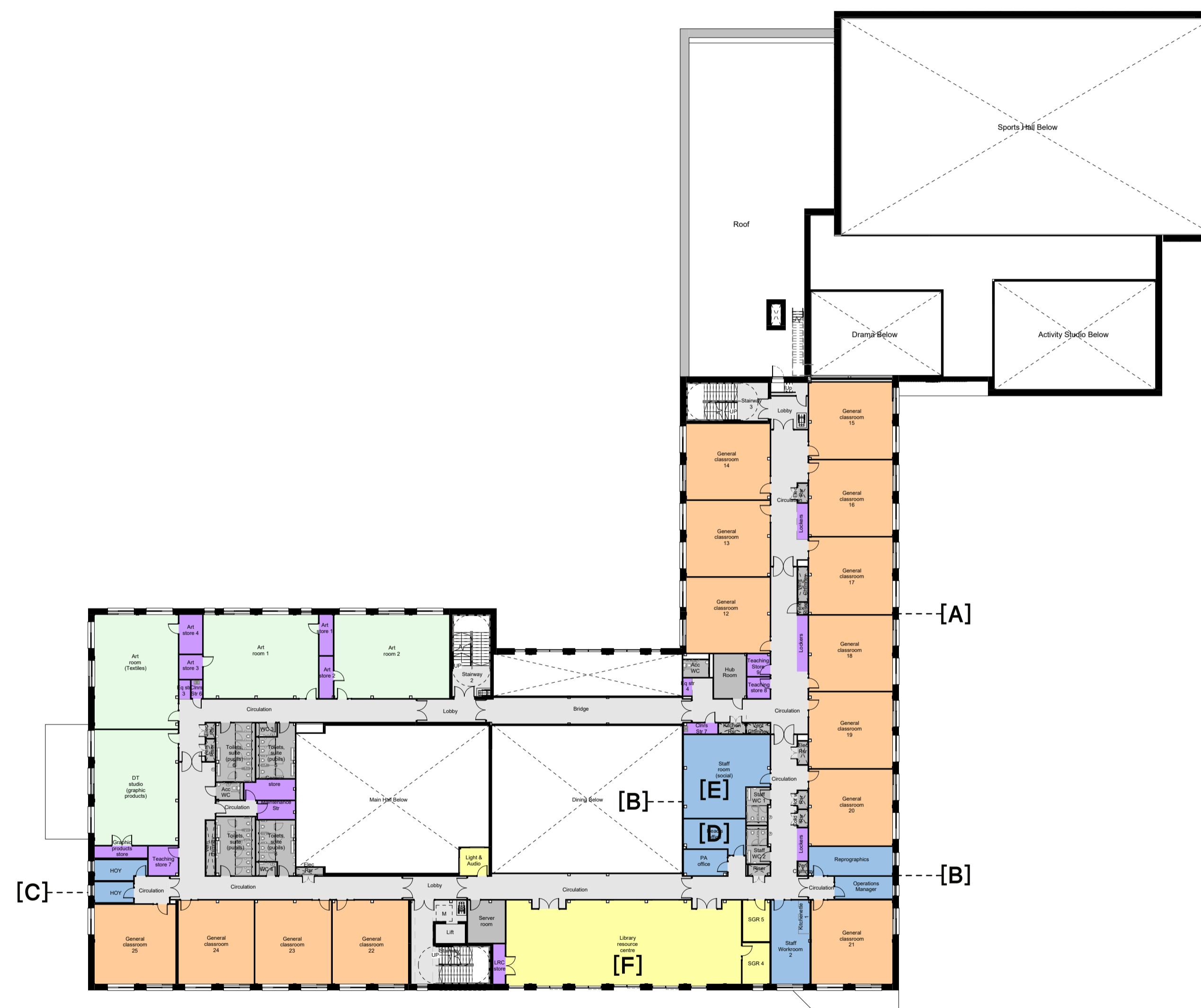
Strategic admin clusters [B] have been created throughout the building, responding to the school's desire to move away from the satellite nature of their current accommodation. There is a careful balance between clustering and providing sufficient staff presence for passive supervision around the school. This is achieved by placing a few offices around the school, generally with a view of main circulation routes [C]. This maximises opportunities for passive supervision while allowing for a logical flow and function of the school and a sense of togetherness the school are looking for.

The Head's office [D] is located at the heart of the school, overlooking the atrium area and adjacent to the staff social space [E].

The library [F] overlooks both the main entrance and the atrium and has also been positioned centrally to the school for ease of access.



- Large Spaces
- Drama / Music
- Teaching
- Admin / Staff Spaces
- Non - Net / Service
- ICT
- Teaching and Non Teaching Storage
- Circulation
- DT / Art / Other
- Library and Learning Resources
- Science



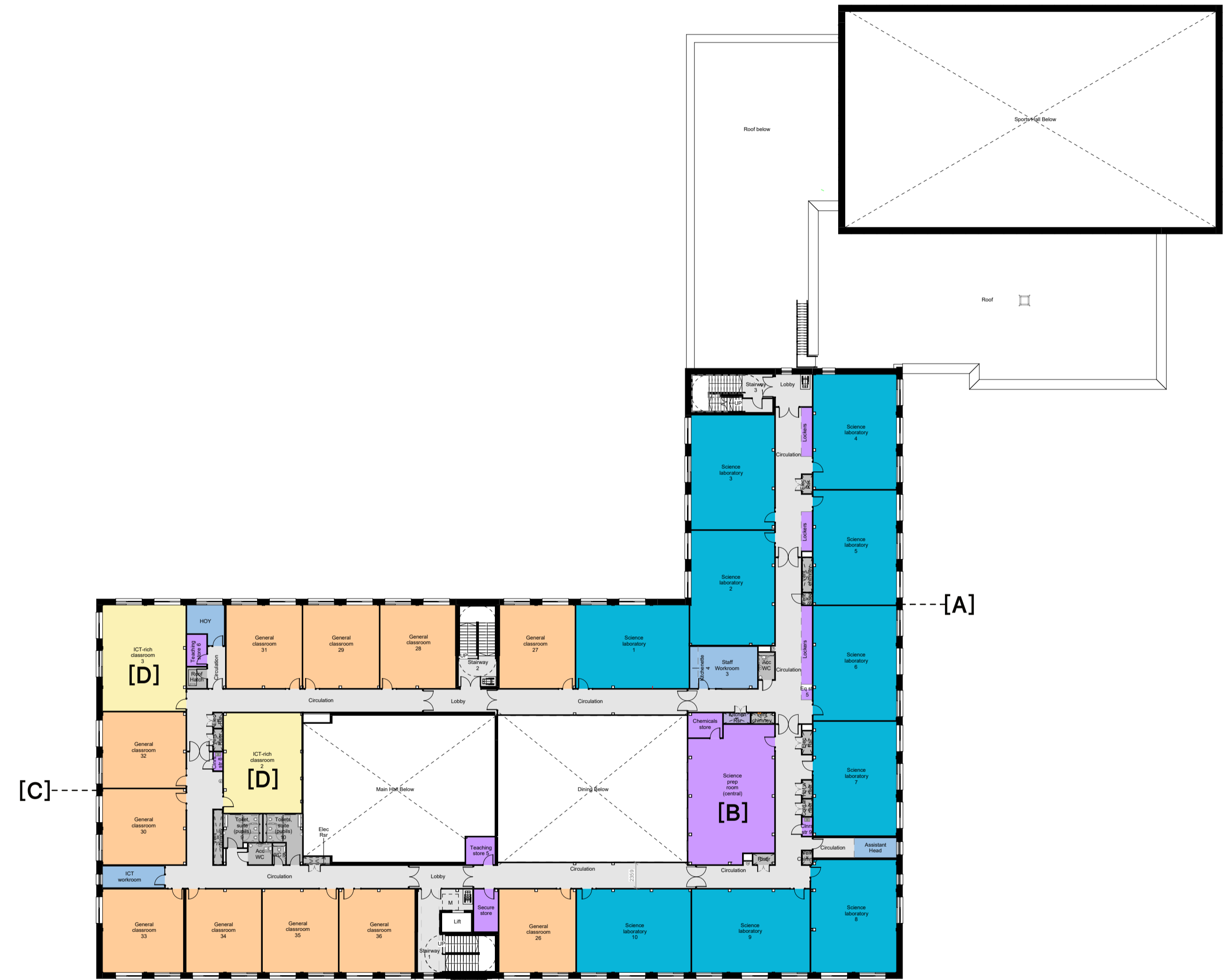
SECOND FLOOR

The second floor forms a distinct science suite [A] with a central prep and chemical store [B].

Along with the rest of the general classroom provision [C], two ICT [D] rooms are located on this floor



- Large Spaces
- Drama / Music
- Teaching
- Admin / Staff Spaces
- Non - Net / Service
- ICT
- Teaching and Non Teaching Storage
- Circulation
- DT / Art / Other
- Library and Learning Resources
- Science



INTERNAL APPEARANCE

A number of key areas of the school were discussed in more detail during the client engagement process. These are spaces especially important for the school operation and student, staff and visitor experience. A selection of these spaces are illustrated on this board.

MAIN ENTRANCE

The location of the main entrance provides a clear view of it on first approach assisted by a feature brick wall leading people to the entrance, a strategic building recess on the ground floor, generous curtain wall arrangement at the main entrance and the library above, and proposed placement of signage on the feature brick wall and above it. Student, Visitor, SEND and Community entrances will be separated, with signage clearly identifying each.

By using a clear secure line and internal organisation, the building can be simply controlled by staff in the reception area. Visitors can have access to an interview room and accessible WC without having to cross the internal school secure line.

DINING ATRIUM

The Dining Hall is centrally located in the teaching block and forms an atrium connecting the whole school across first and second floors. It also has a direct connection to the external heart space and plays an important role in the new building's connectivity with the retained maths block.

THE LIBRARY

Located on the first floor, the library overlooks both the main entrance and the atrium dining, providing further interest and an active frontage to both spaces.

The library is a more relaxed area of self-directed study and one of the key spaces in the new building. The colour scheme in the library can be bolder than that of general classrooms, which call for a neutral, calm colour palette. There's opportunity to introduce colour in the floor finishes by highlighting study, circulation or shelving areas.



Typical Classroom



Dining Atrium



Reception



The Library

DESIGN STATEMENT

The Design Strategy has to work with sequence of construction of the school building alongside the existing building and the retention of the Maths block. How the new building connects with the Maths block is important and a vibrant outdoor social area is planned between the buildings which is enlivened by the dining area opening onto the space. The strategy also the new school building to have a clear presence onto Seal Road, with the main entrance signified by a feature brick wall, recess and use of curtain walls. This creates a clear way finding strategy absent in the existing buildings.

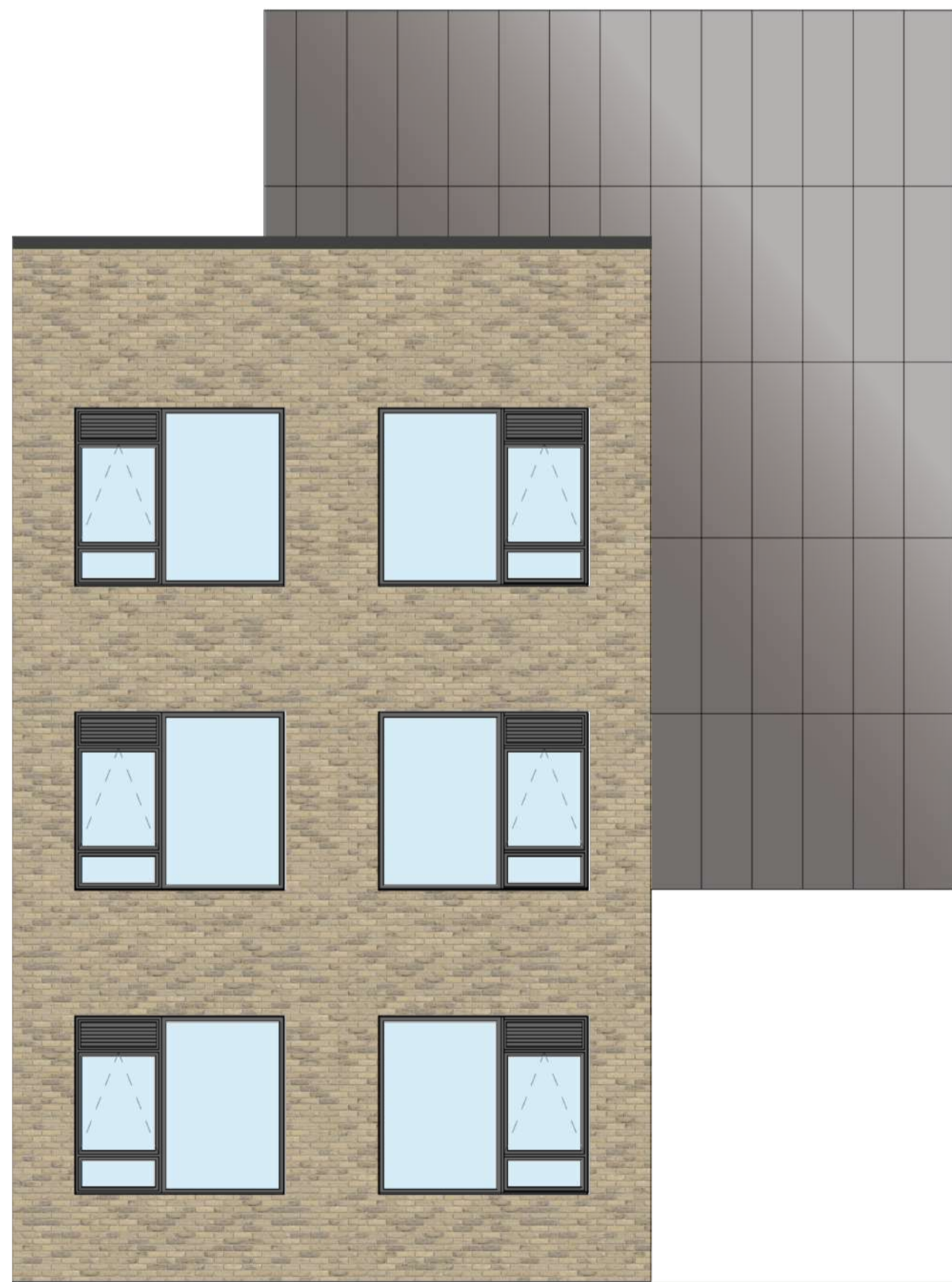
Although taller than the existing school buildings to be demolished, the footprint of the new school building is more compact and present a much shorter street elevation at circa 75m (245ft) compared to the 179m (590ft) long elevation of the existing school. In addition the new building will be set back twice as far from Seal Road at 60m (196ft) compared to 27m to 46m (88 to 150ft) of the existing buildings. This reduces the impact of the massing and scale of the new building on the streetscene, opens up the streetscape for views of more green spaces, provides more landscape opportunities and overall improves spatial arrangement and relationship of the building to site.



South elevation, showing the view of the school from Seal road



North elevation, showing the view of the school from school grounds, looking back towards Seal road



Typical bay study



Main entrance bay study

EXTERNAL APPEARANCE

The proposed facade is predominantly brick. The material was selected for its durability, suitability within the local context and relationship with the maths block. A variety of brick colour options were considered before the preferred and intended buff colour was chosen.

Feature brick areas are proposed at the main and community entrances expressed in both feature bonds and a feature colour (dark grey). This provides a robustness and civic quality to the building while also clearly expressing the location of the entrances, which will aid wayfinding.

The upper section of the sports hall is proposed to be clad in rainscreen cladding. In collaboration with the school, the preferred dark grey colour has been chosen for this.

In strategic areas (main entrance, library, dining, activity studio, community entrance, music and drama classroom) curtain walling has been proposed. This will show the significance of these spaces, clearly indicate entrance areas and provide interest and activity to the facades

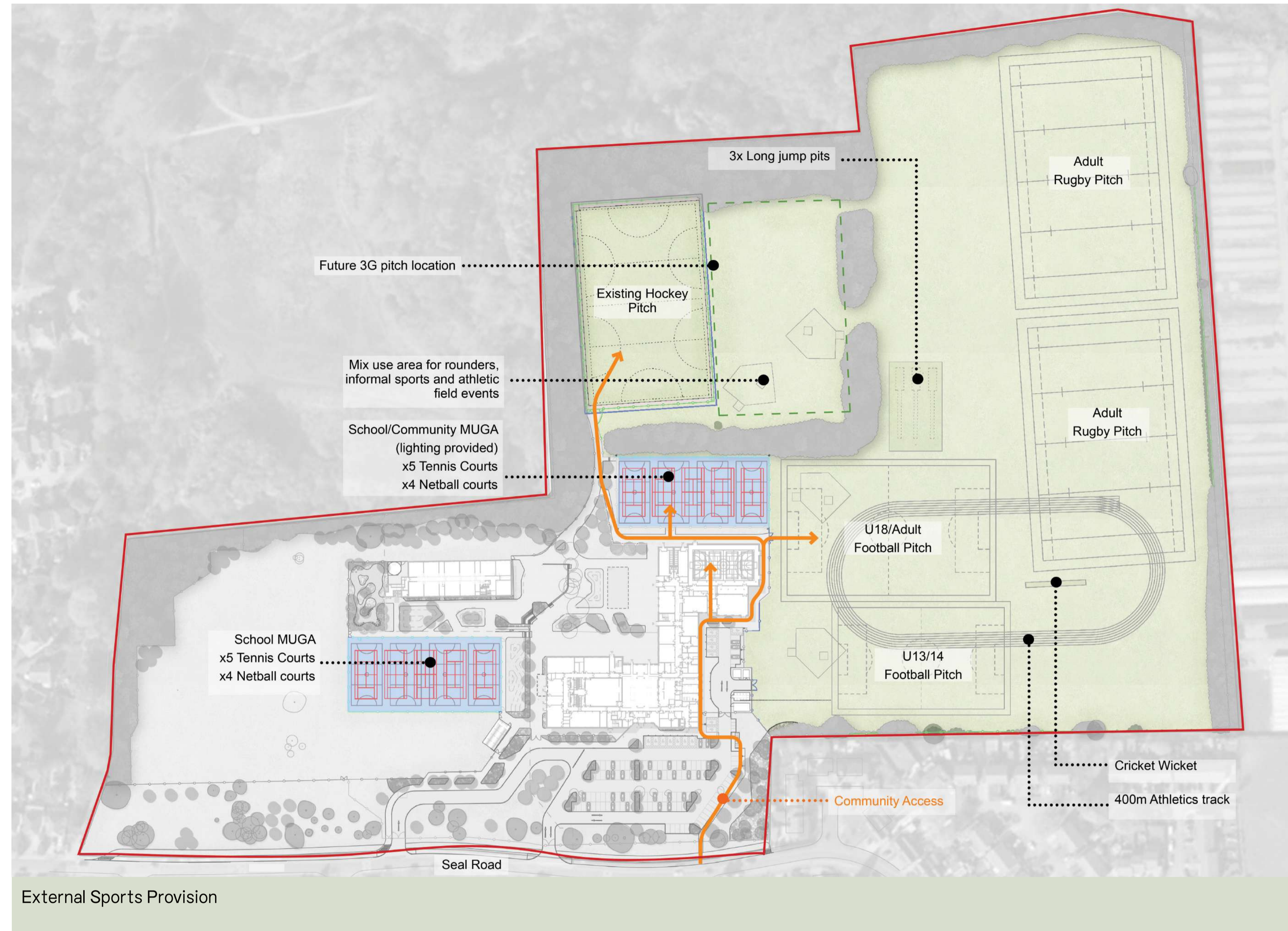
COMMUNITY

The is School is part of the local community. The recent closure of the sports facilities to the public because of the poor condition of the buildings will be addressed through providing new facilities, open to the community once more.

The masterplan groups the new indoor Sport England compliant sports hall, activity studio, changing rooms, drama and music facilities in a single area. The location is adjacent to the main school playing field, new MUGA court (fitted with lighting), the existing hockey pitch and the location of the planned all-weather football pitch alongside the hockey pitch.

Security and safety of pupils is forefront in the masterplan. The grouping of facilities and provision of a separate entrance allows the main school building and core grounds to be secured and separated when the community has access and use. This means the facilities can be flexibly used by the community even when other school activities are taking place on site.

- Key**
- Sports Hall / Activity Studio
 - Admin
 - Storage
 - Music and Drama
 - Ancillary Spaces
 - Circulation



INDOOR SPORT AND RECREATION FACILITIES

The new indoor sports hall will be constructed to Sport England requirements for a 4-court facility and will provide space for netball, basketball, badminton and cricket practice nets alongside other uses.

Drama studio facilities will be made available alongside the sports facilities for non-school use.

New changing facilities will be provided for school and community use, meeting requirements for team sports, referees and accessibility. The facilities will be available for use by Stockport Bramhall Hockey Club and future users of the new all-weather football pitch.

OUTDOOR SPORT FACILITIES

The School already benefits from extensive grassed playing fields, though the surface can become waterlogged reducing winter use. The proposals will provide a range of outdoor facilities to replace and improve access to sport.

- New community MUGA (5 netball courts / 4 tennis courts) – equipped with lighting located behind the new indoor sports hall to shield evening use from nearby homes
- School MUGA (5 netball courts / 4 tennis courts) – for daytime school use only
- New all-weather, artificial football pitch – situated adjacent to the existing hockey pitch; to be delivered by Stockport Council

Where the existing grass playing field is affected by construction works the affected pitch will be reinstated and a new playing surface provided.

BRAMHALL HIGH SCHOOL PUBLIC CONSULTATION

SUSTAINABILITY

Sustainably responsible design is integral to the success of the future built environment. As such, the design uses a multi-faceted approach towards securing net zero carbon emissions in operation. This is achieved by:

- Embedded carbon reduction in the use and selection of construction materials and construction methods
- Efficiency in design and layout for heating, lighting and cooling
- Use of renewable technologies including photovoltaic cells, ground source and air source heat pumps

LANDSCAPE AND ECOLOGY

The School is situated adjacent to the Happy Valley Local Nature Reserve, an important natural habitat. All works are confined to the existing school site with no encroachment on the reserve. Ecology surveys and reports support the proposals and will demonstrate that post-development a minimum 10% biodiversity net gain on-site will be achieved as required by Government. Matters to be included are provision to support bats and nesting birds, and to treat and remove invasive species.

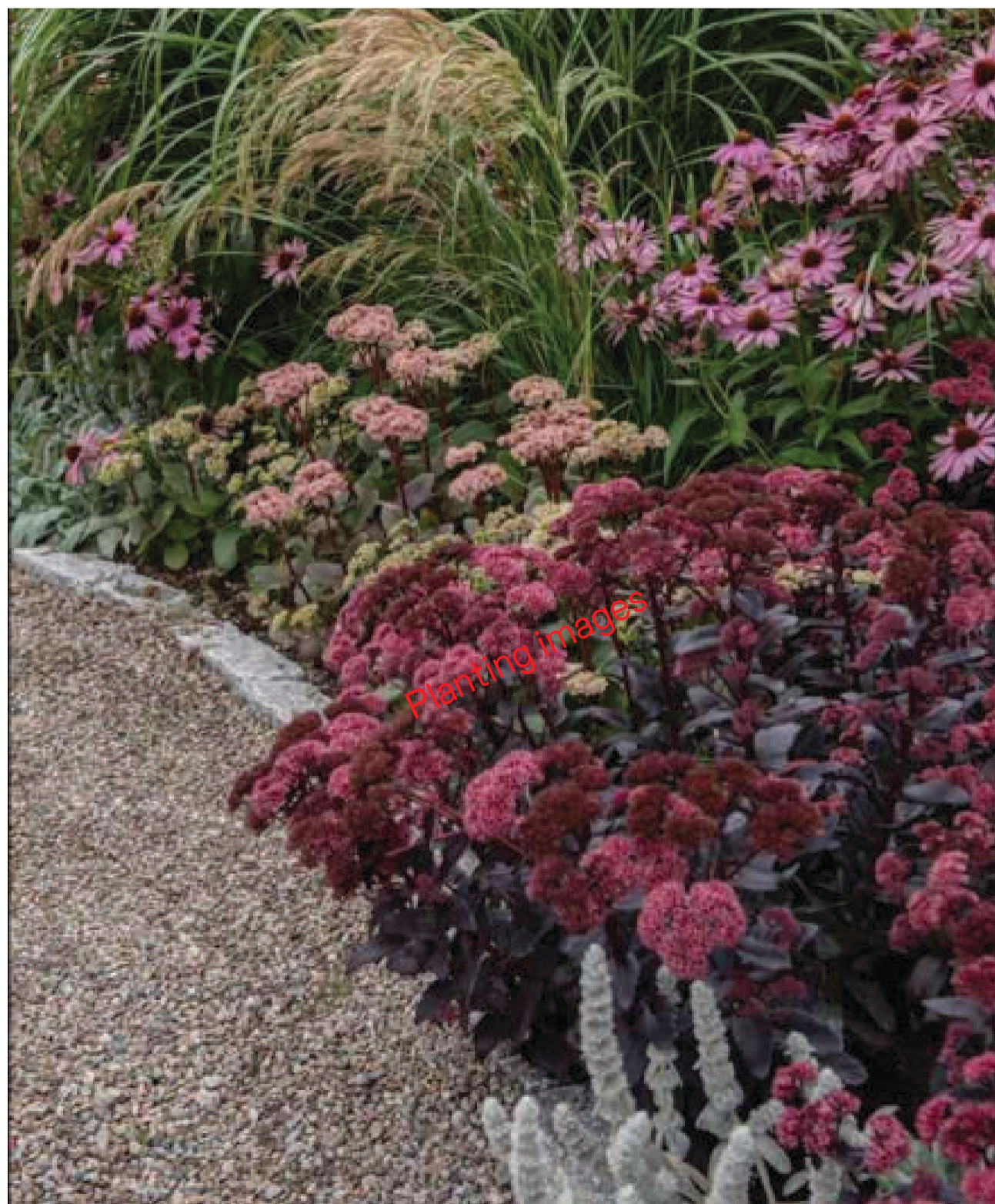
LANDSCAPE MASTERPLAN

Central to the new School is creating a welcoming and engaging environment that enhances the student experience while integrating with the surrounding context.

Arrival, sport, activity, dining, working and learning environments have been created within the grounds integrated with the layout of the building.

- Arrival provides a defined public space, a sense of place and welcome for students, staff and visitors; trees, planting and paving guide you through the space
- Sport is focused on the existing and planned facilities and opening up to community use
- Activity is allowed to move between the interior and exterior, forming a central courtyard between the new school building and retained maths block; seating, performance and rest areas are created
- Dining, working and practical learning spaces are formed in the central courtyard and wider grounds; a more dynamic place to interact, learn and socialise
- SEMH needs are met with a calm and inclusive environment for play, learning and quiet retreat

Seal Road presents a number of mature trees; most of which will be retained and protected during construction. Some trees will be lost to accommodate the new school and through demolition and clearance of the existing buildings. These trees will be replaced through the new landscaping proposals on a ratio of 2 to 1. Other planting will include hedgerows and wildflower meadow areas. Native species will be selected in new planting to support wildlife and habitats.



TRANSPORT AND PLANNING MATTERS

All pedestrian, cycle and vehicular access will be taken off Seal Road. As the new buildings move southeast along Seal Road then the access points will also move to reach the new staff car park, SEMH parking and bus waiting and turning area.

A new cycle lane will be built along Seal Road along the site frontage and the existing bus loop removed once the new school is completed.

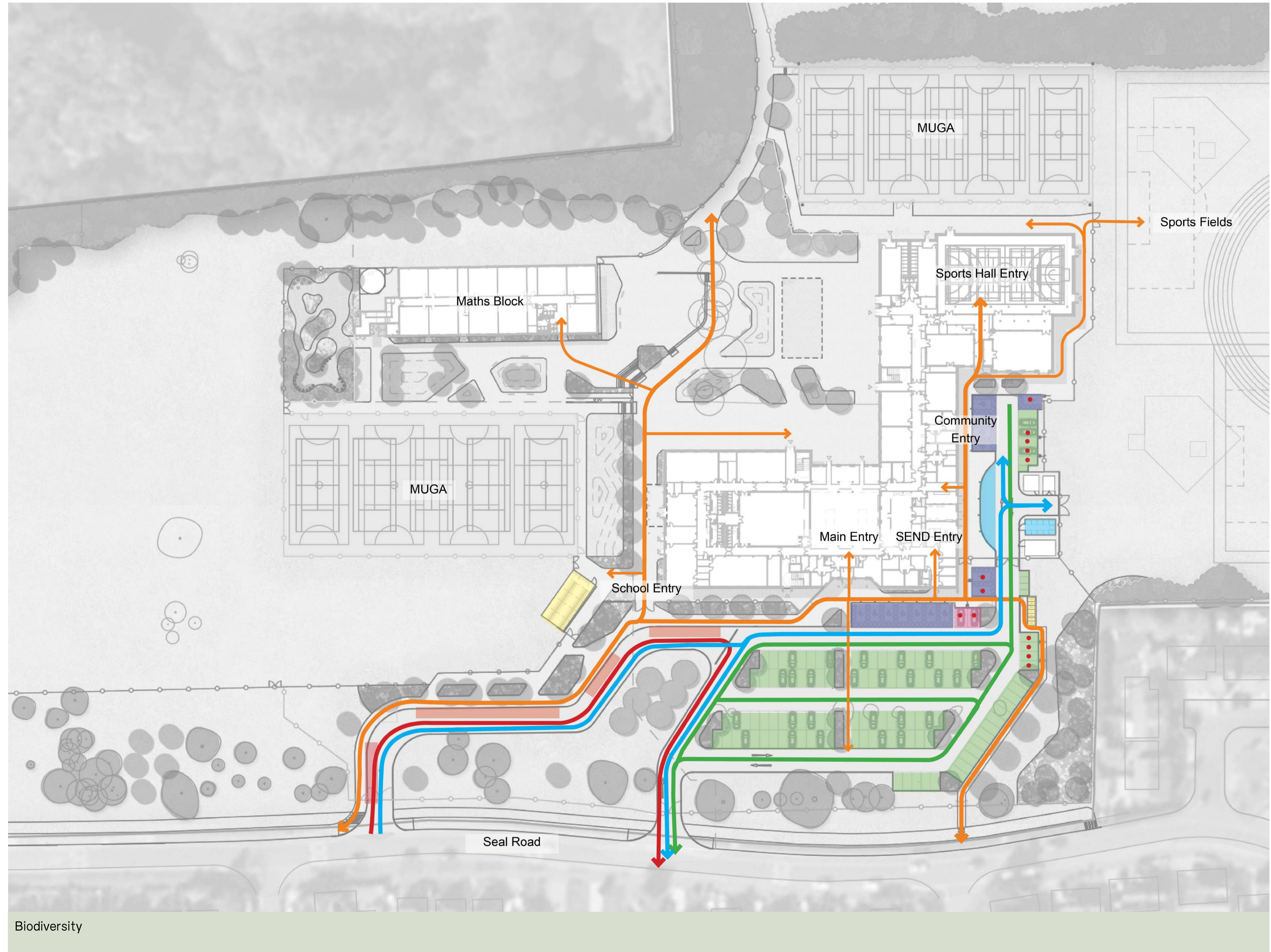
- A total of 132 parking spaces, including 14 access spaces and 13 EV charging bays
- Covered, secure bike storage for circa 200 bicycles
- Bus waiting area for up to 5 buses will be provided, with turning loop

Car parking will be available outside of usual school hours, i.e. weekends and evenings, for users of the community facilities.

A new School Travel Plan will be produced to encourage safe, active travel choices, i.e. on foot, bike or bus to reduce the number of students attending school by car, and to promote road safety awareness for pupils.

Key

- Pedestrian
- Bus
- Vehicle
- Service, refuse and delivery vehicles
- Car parking - 118 spaces
Motorcycle parking - 5 spaces
Existing - approx. 125 car spaces
- Disabled parking - 14 spaces
Existing - 5 spaces
- Bike parking - 14 hoop spaces (7 hoops)
- 188 internal storage
Existing - 70 spaces
- Delivery, services and refuse collection
- Bus drop off
- SEND parking/drop off bays - 2 spaces
- EV parking bays - 13 spaces



CONSTRUCTION PROGRAMME

Subject to receiving planning permission the new school will be developed in three key stages:


- Stage 1 – Construction of the new school building - commencing autumn 2026, completing summer 2028
- Stage 2 – Demolition of the existing school buildings (except the retained Maths block) summer 2028 to spring 2029
- Stage 3 – Completion of landscaping and grounds post demolition summer 2029

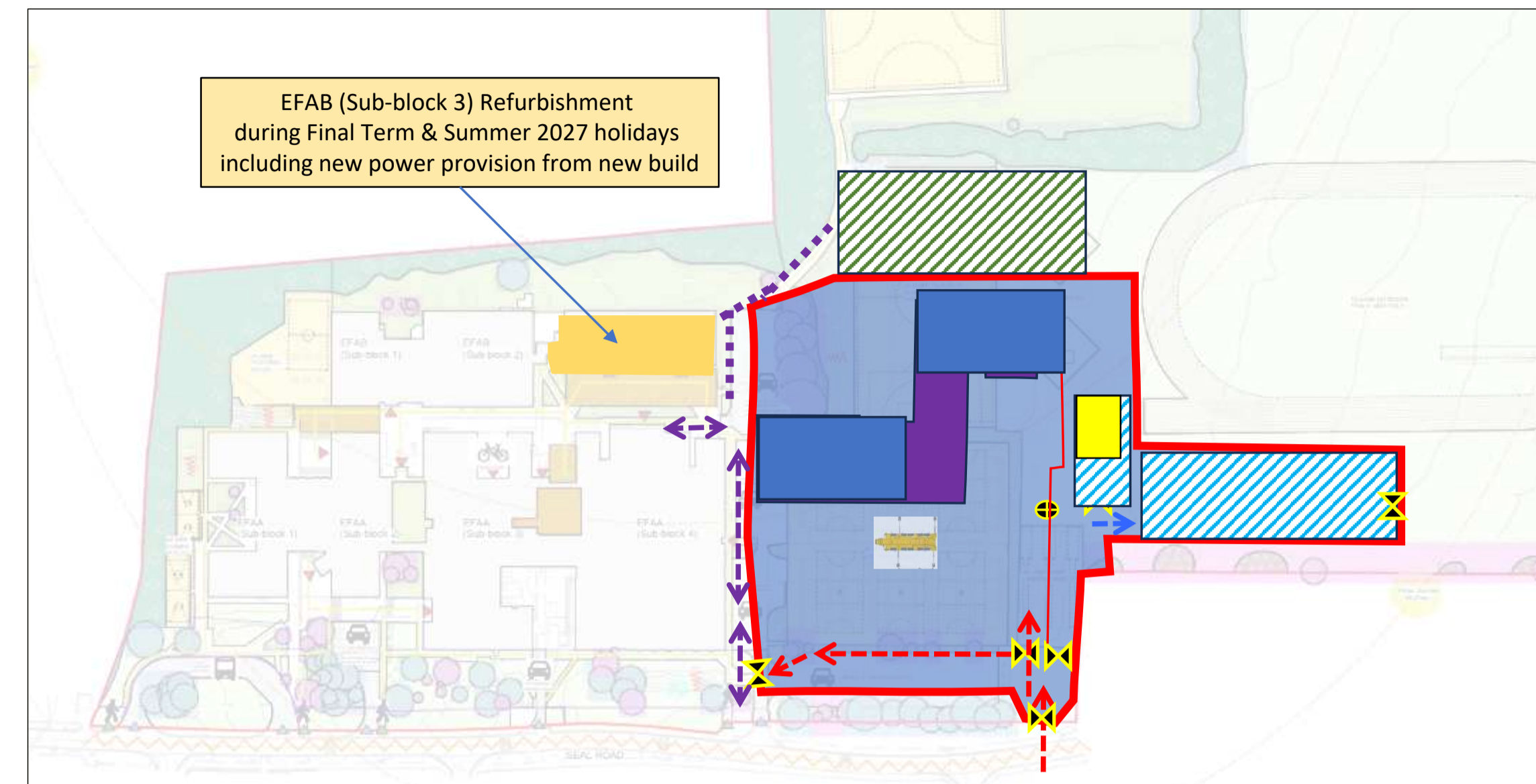
The delivery of the new all-weather pitch is to be co-ordinated by Stockport Council for a future date.

Construction work will be disruptive to the school and local residents, particularly those closest on Seal Road and Nevin Close.

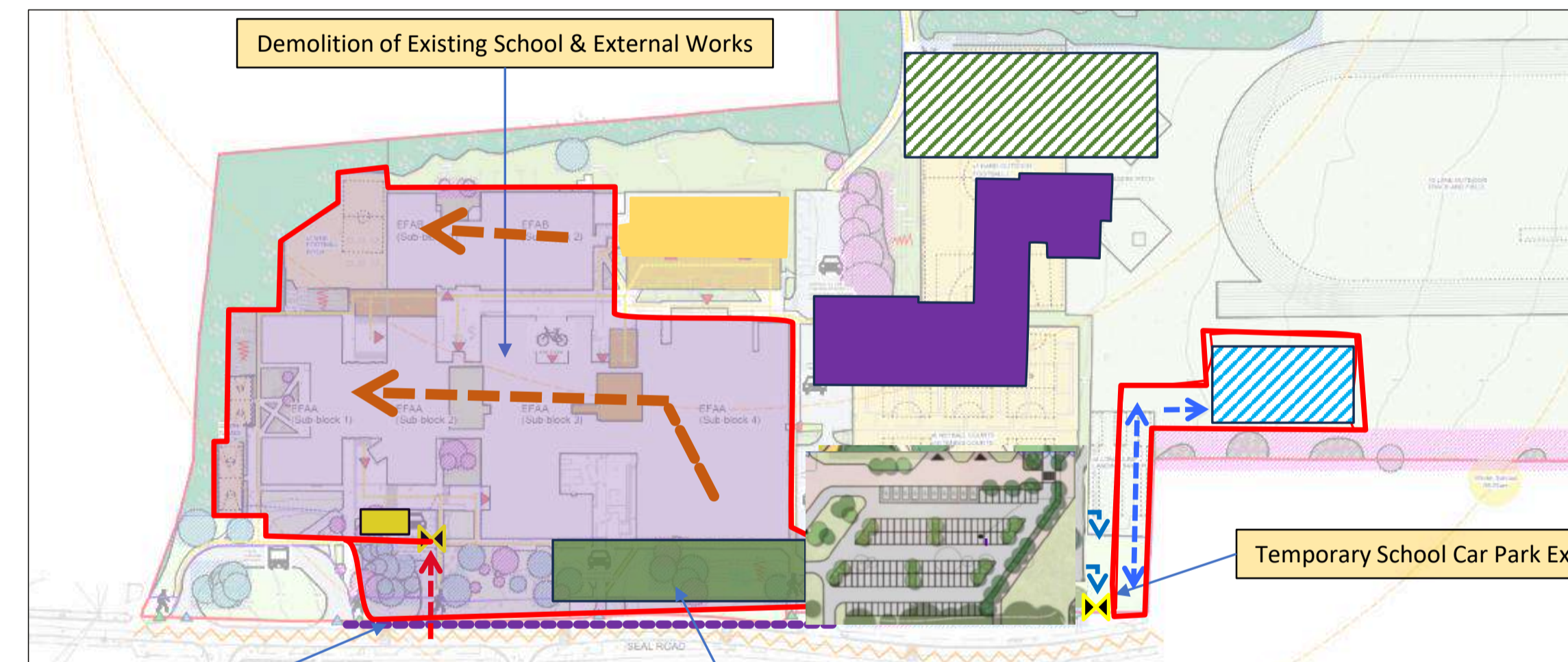
Willmott Dixon is experienced in managing its sites and will strive to work with the community to minimise that disruption. For example, placing restrictions on deliveries around school start / close times and working around the school curriculum and exam periods. Temporary arrangements for parking and access, and a site compound for the works will be arranged during construction and demolition phases.

Legend / Comments

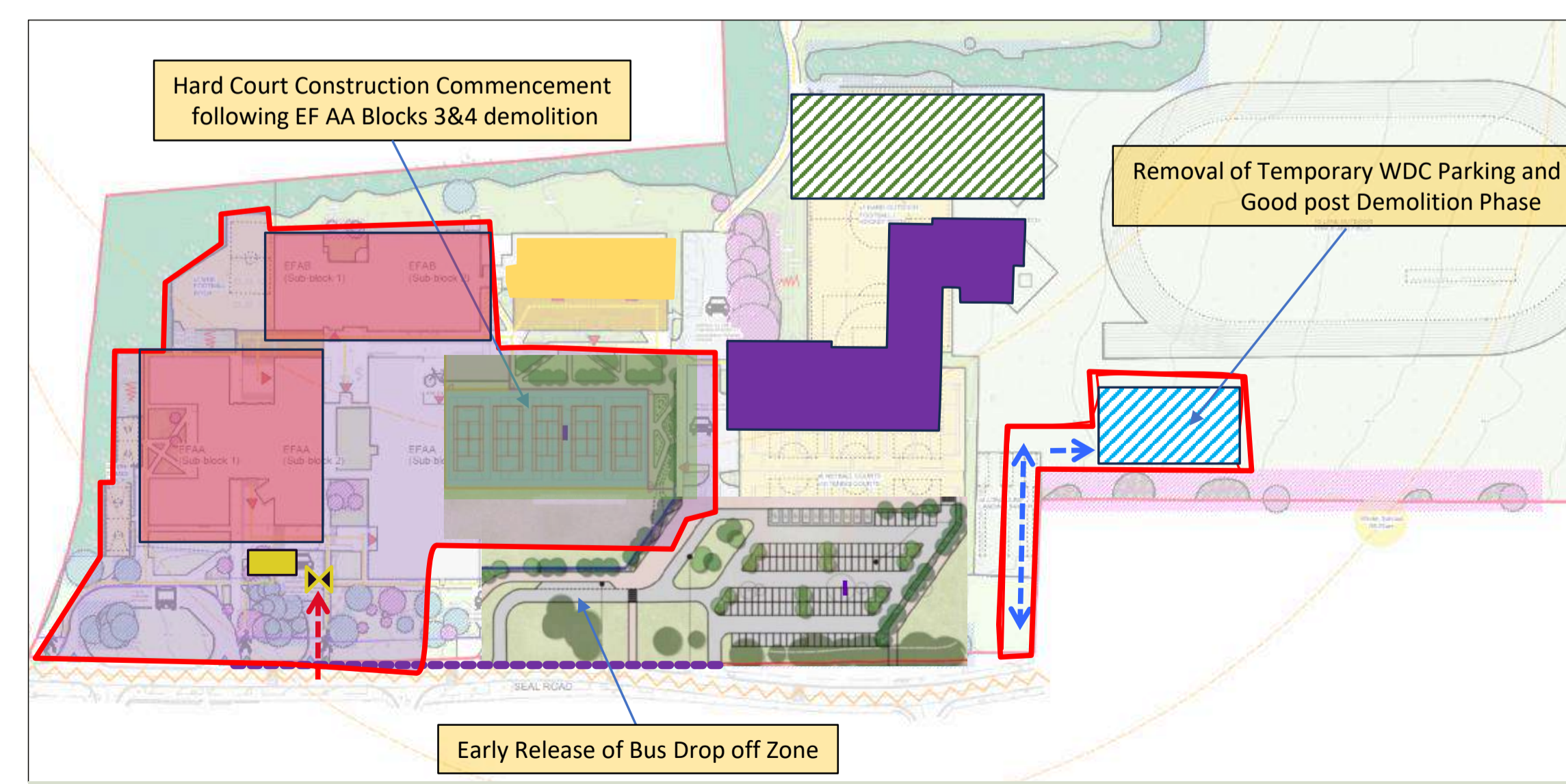
-  Hoarding Line
-  WDC Site Office and Security
-  Access Gate
-  Security Turnstile
-  Construction Route
-  Shared Vehicle Access Route
-  School Pedestrian Access Route
-  Envelope
-  New Building Location
-  Waste Collection
-  Mortar Silos
-  Crane Location



Phase 1 - New Build



Phase 2 - Demolition



Phase 2 - External Works



BRAMHALL HIGH SCHOOL PUBLIC CONSULTATION

PLANNING MATTERS

Bramhall High School is located within the Green Belt on the edge of the urban area of Bramhall.

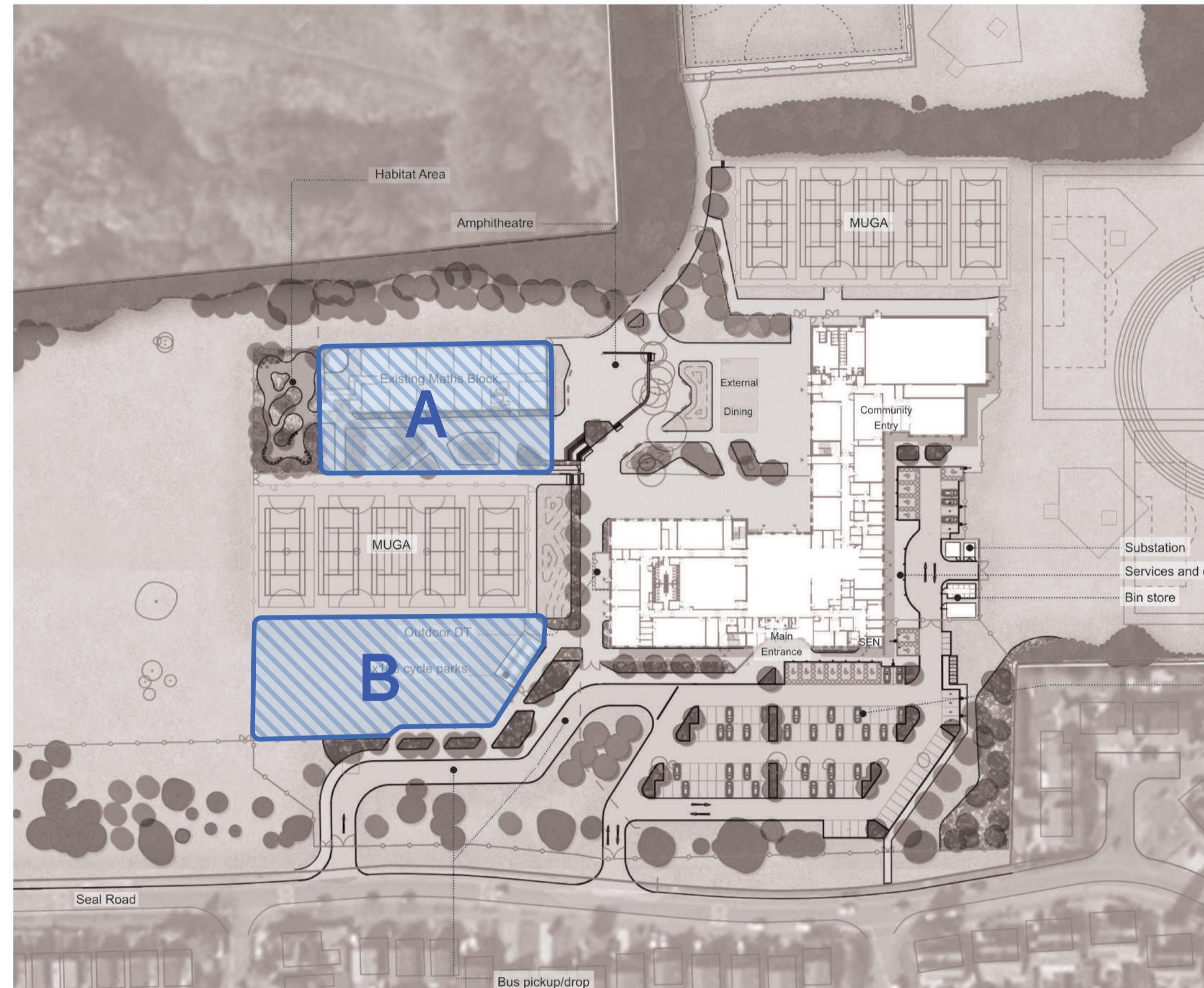
As part of the planning application we will demonstrate that the existing school buildings, proximity to homes and enclosed nature of the site means this can be treated as 'Grey Belt' under national planning policy. This means that in principle redevelopment for the replacement school is acceptable.

The application process will include a range of supporting surveys and reports, including:

- Design & access statement, flood risk assessment and drainage strategy; ecology surveys; tree survey; transport statement; crime impact statement; lighting impact assessment; noise impact assessment; energy statement; sustainability statement and planning statement.

The application evidence will demonstrate that this is a sustainable development, that it conforms with relevant national and local planning policies and therefore it can be supported by the Council. Those policies include key matters of a high-quality design and architecture; a sustainable and energy efficient building; high-quality landscaping; meeting parking and access standards and delivering a 10% biodiversity net gain.

All comments received from this consultation, whether in support or not, will be fully reported to the Council through a Statement of Community Involvement to assist the Council in its decision-making.



FUTURE NEEDS

The School has a current planned capacity for 1350 students and the proposals will maintain the capacity at 1350 students. Should future education needs indicate a requirement for expansion in capacity the masterplan has identified two potential areas for physical exp. Area [A] focused on the existing Maths block and Area [B] to the school frontage.

HAVE YOUR SAY

We would like to hear from you about the proposals.

Forms are available here to fill out and return today.

Alternatively you can send your comments online through the consultation website at www.planred.co.uk/consultation and follow the links, or email your comments directly to info@planred.co.uk, (put "Bramhall High School" in the subject field).

The website will remain open for comments after the event.



All comments received will be treated as strictly confidential and used only for the purpose of analysis and to provide a summary of comments to present to the Council. All contact information received will be kept private and deleted upon completion of the planning application process.

Willmott Dixon, working with Bramhall High School and the Department for Education, intends to make its planning application shortly in mid-April. You will have the opportunity to make further comment directly to the Council at this time.

THANK YOU FOR ATTENDING THIS CONSULTATION



View of the proposed main entrance